

**PARKPLUS**  
HIGH DENSITY VEHICLE STORAGE

# TP500

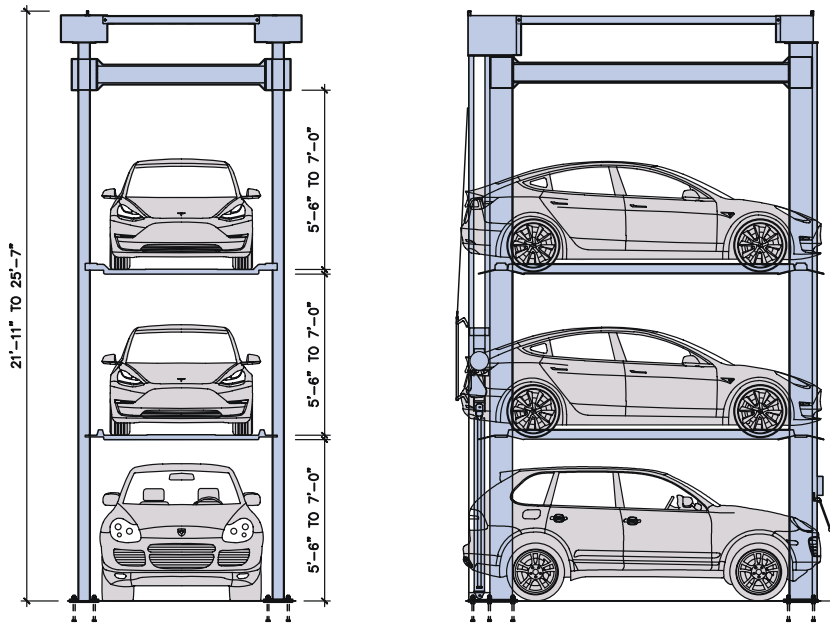
**TRIPLE STACKER**

3 Level Parking System



# SPEC SHEET

# PARKPLUS TP500 TRIPLE STACKER



## Clearance

MODEL	HEIGHT
C/C/C	22'-6"
S/S/S	25'-0"
S/S/S*	27'-0"

\*LA City requirement  
C = Compact/Sedan S = Standard/SUV

## Width

MODEL	WIDTH
W01	8'-6"
W02*	8'-10"
W03	Custom

\*LA City requirement  
WIDTH = Center of Leg to Center of Leg

The **PARKPLUS TP500** Triple Stacker is a 4-post, 3-level vehicle lift for parking cars one above another. The TP500 raises and locks two platforms in place allowing a third vehicle to be parked at grade.

Entire assembly comes pre-welded and is assembled in the field. Stackers may be installed as single units or in arrays with shared common legs. Stacker is designed to be mounted on grade with an engineered foundation. Stacker may be installed indoors provided floor is certified to support the weight.

The **PARKPLUS TP500** Triple Stacker is designed to be installed both indoors and outdoors. Platform height is set at fixed height per project specification between 5'-6" min. and 7'-0" max. Each city may have minimum height requirements and different clear requirements for code required parking. Owner/Architect should review with local planning and building departments. **MEP coordination with project team must meet code requirements and satisfy equipment clearances.**

## Suitable for

- Standard passenger vehicles
- SUVs
- \*Custom solutions for vans, RVs and boats

## Specifications

Load per Platform:	6,000 lbs.
Weight of Unit:	+/- 9,000 lbs.
Length of Platform:	15'-0"
Length incl. Overhang:	16'-6" to 18'-0"
Width of Unit:	8'-6" to 8'-10"
Height of Unit:	21'-11" to 25'-7"
Operation:	Hydraulic
Control:	Push Button Control
*Custom Height and Width Available	

## Power Pack

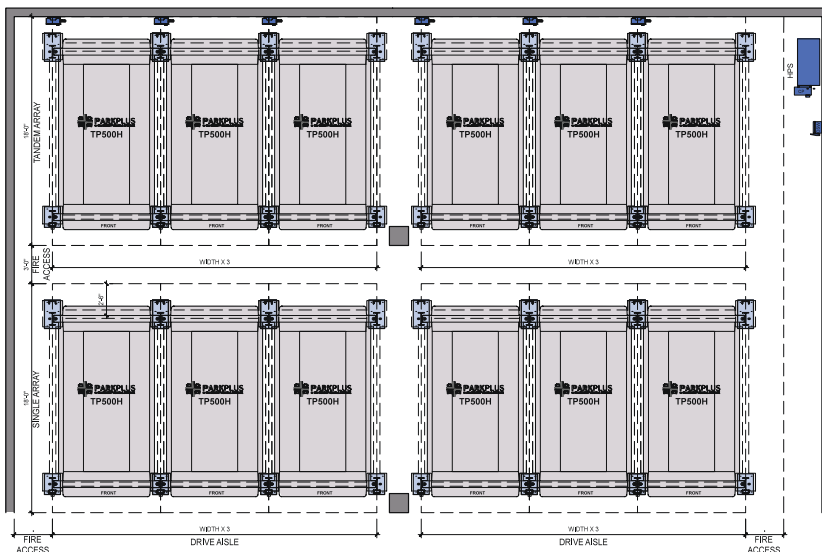
Hydraulic Power System (HPS)  
HPS-3P15: 1-12 units  
(208-230V / 3 PH / 60 HZ / 20 HP / 48 FLA)

## Electrical

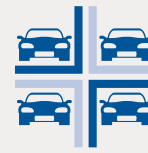
1 Disconnect required per HPS  
3 PH 208-230V / 60Amp  
All control wiring is a Class 2 Circuit 24V

## Layout

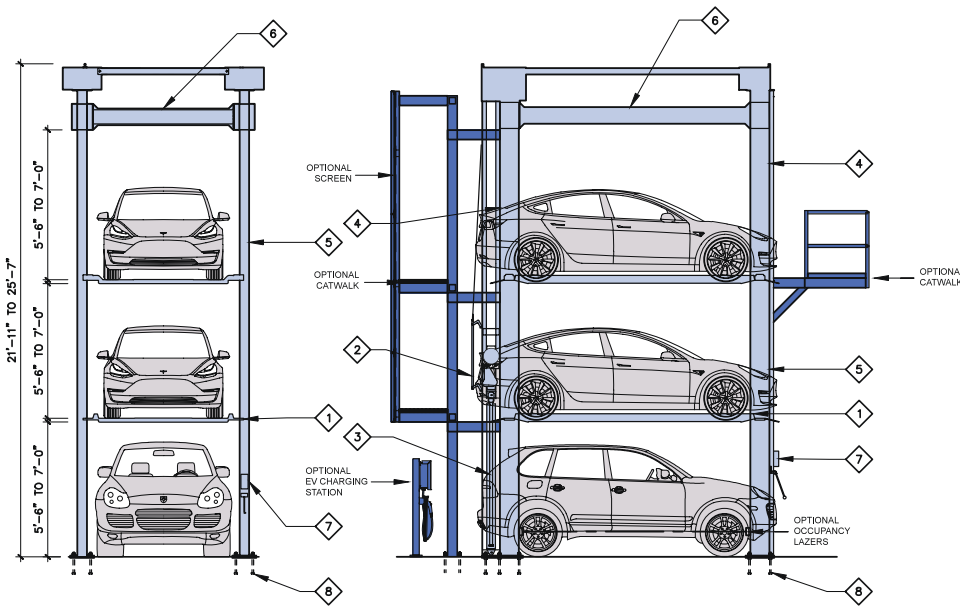
**PARKPLUS TP500** Triple Stacker can be arranged in single or tandem arrays on either side of a drive aisle. Queuing space of at least 2 vehicles must be provided to allow for shuffling of cars. Queuing space may be in drive aisle. For commercial projects, during peak traffic, all platforms will be lowered for quick filling of stackers. Surface space to be provided for code-required Accessible Parking.



- In-house Design, Manufacturing, Installation & Service
- Galvanized Platforms, Commercial-Grade Machines
- Minimal Moving Parts – *Reduced Maintenance*
- Premium Quality Hydraulic Cylinders



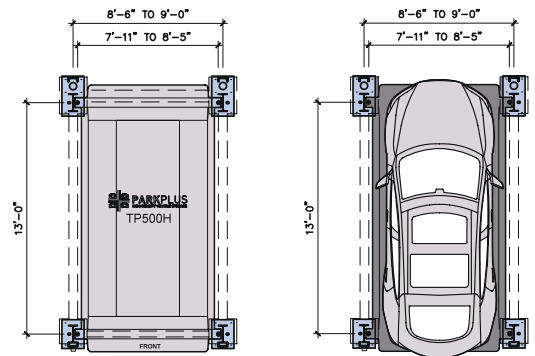
**PARKPLUS**  
HIGH DENSITY VEHICLE STORAGE



## Components

- 1 PLATFORMS
- 2 LOCKING MECHANISM
- 3 HYDRAULIC CYLINDER
- 4 REAR LEG ASSEMBLY
- 5 FRONT LEG ASSEMBLY
- 6 SEISMIC MOMENT FRAME\*
- 7 PUSH BUTTON CONTROLS
- 8 EMBEDDED ANCHOR BOLTS

\* Required in seismic zones



## Applications

TP500 Triple Stacker can be installed in attended/valet applications:

- Multi-Family Residential Buildings
- Indoor & Outdoor Installations
- Low & High Rise Buildings
- Commercial Buildings
- Surface Lots

## ADDITIONAL INFORMATION

### Safety

Device is equipped with safety locking system. The safety hook system holds full weight of vehicle on platform in locked position. Device is equipped with a secondary (anti-fall) safety system. Device can be equipped with individual keyed controller for extra safety. Self-attended applications may require additional sensors to detect objects located under platform or entering the area below platform.

### Fire Protection

In most metropolitan areas, car stackers are reviewed as similar to high piled storage and non-building structures. Fire rating of structural components is not required. Sprinklers may be required per following section. Each city may have fire department guidelines.

### Fire Sprinklers

**Outdoor:** 1. Most cities do not require fire sprinklers. 2. May need to conform to additional zoning regulations and building code requirements.

**Indoor:** 1. Installation shall be in a sprinklered garage. In tandem array, additional sprinkler requirements may apply. 2. Sprinkler Plans filed and approved by local municipality. 3. Sprinkler system designed as required by NFPA 13 and local building codes. 4. Clear building height within parking area must accommodate height of equipment plus additional requirements for adequate coverage of fire sprinklers.

### Temperature

Device is designed to operate between 20° and 120° F. For below freezing environments, hydraulic heaters for Power Packs are recommended.

### Loading

Structural design and loading is provided on a project by project basis and is dependant on seismic zones, soil conditions and other environmental conditions.

### Warranty

12-month Standard Manufacturer's Warranty on new equipment.  
Equipment Lifespan: Indoor = 7,500 cycles; Outdoor = 5,000 cycles.

### Service

At end of 12-month warranty period a service contract is available upon request.

Rental option may include Service & Maintenance for full term.

### Approvals

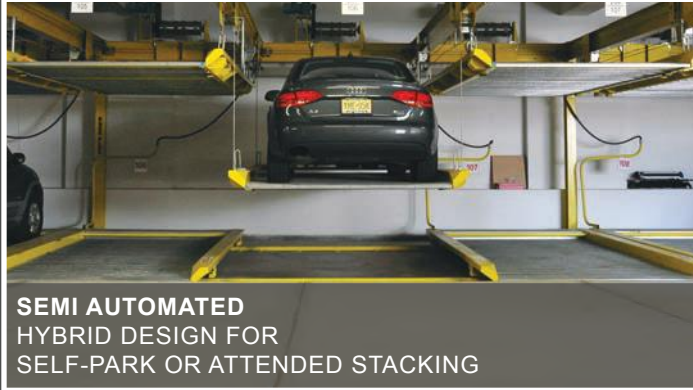
- MEA/OTCR Certified, City of New York
- LAETL Approved, LARR#930532, City of Los Angeles
- California Seismic Code Compliant
- Miami Dade County Compliant
- Approved in Multiple U.S. Cities



**MECHANICAL**  
ATTENDED SYSTEMS  
FOR BASIC STACKING



**AUTOMATED**  
ADVANCED TECHNOLOGIES FOR  
ROBOTIC PARKING SOLUTIONS



**SEMI AUTOMATED**  
HYBRID DESIGN FOR  
SELF-PARK OR ATTENDED STACKING



**DISPLAY UNITS**  
CREATIVE SOLUTIONS FOR  
CUSTOM DESIGN & EXPOSURE

INFO@PARKPLUSINC.COM

## OUR GLOBAL FOOTPRINT



CALL US: **8-444-PARKPLUS**



**PARKPLUS, INC. HEAD OFFICE**  
83 BROAD AVENUE, SUITE 2  
FAIRVIEW, NJ 07022

**PARKPLUS CALIFORNIA**  
8640 TAMARACK AVENUE  
LOS ANGELES, CA 91352

**PARKPLUS FLORIDA, INC.**  
1111 OLD GRIFFIN ROAD  
DANIA BEACH, FL 33004