

The **PARKPLUS DP003** Double Stacker is a hydraulic 2-post, 2-level cantilevered vehicle lift for parking cars one above another. The **DP003** raises and locks a platform in place so that a second vehicle can be parked at grade.

Entire assembly comes pre-welded and is assembled in the field. Stackers may be installed as single units or in arrays with shared common legs. Stacker is designed to be mounted on grade, concrete or asphalt. Approved foundation system may be required for installation of stackers.

The **PARKPLUS DP003** Double Stacker is designed to be installed indoors and outdoors. Platform height is field adjustable in 1 1/2" increments. Each city may have minimum height requirements and different clear requirements for code required parking. Owner/Architect should review with local planning and building departments. **MEP coordination with project team must meet code requirements and satisfy equipment clearances.**

## Suitable For

- Standard passenger vehicles
- SUVs

## Specifications

<b>Load per Platform:</b>	6,000 lbs.
<b>Weight of Unit:</b>	+/- 3,050 lbs.
<b>Length of Platform:</b>	13'-6"
<b>Length incl. Overhang:</b>	16'-6"
<b>Width of Unit:</b>	7'-11" to 9'-0"
<b>Height of Unit:</b>	9'-6" to 9'-10"
<b>Operation:</b>	Hydraulic
<b>Control:</b>	Push Button Pendant

*\*Custom height and width available*

## Power Pack

Hydraulic Power System (HPS)

<b>HPS1:</b>	<b>1-2 units</b> (208-230V / 1 PH / 60 HZ / 2-3 HP / 18 FLA)
<b>HPS-1P10:</b>	<b>1-30 units</b> (208-230V / 1 PH / 60 HZ / 10 HP / 40 FLA)
<b>HPS-3P10:</b>	<b>1-30 units</b> (208-230V / 3 PH / 60 HZ / 10 HP / 28.4 FLA)

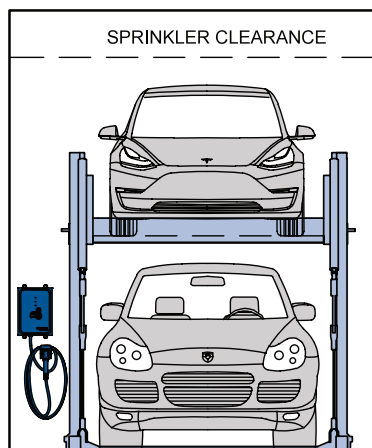
## Electrical

1 Disconnect required per HPS  
3 PH 208-230V / 40Amp  
1 PH 208-230V / 60Amp  
*All control wiring is a Class 2 Circuit 24V*

## Applications

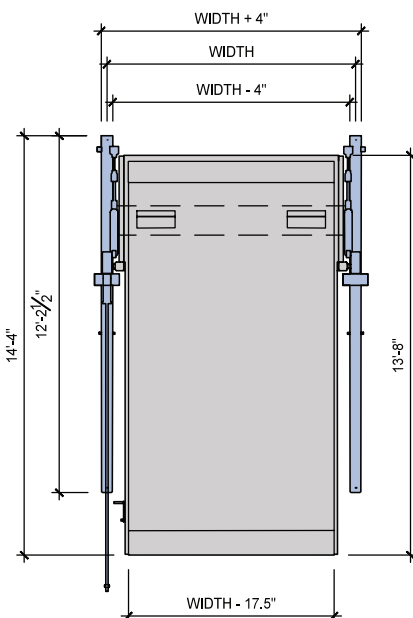
**DP003** Double Stacker can be installed in attended/valet and self-park applications:

- Single & Multi-Family Residential Buildings
- Indoor & Outdoor Installations
- Low & High Rise Buildings
- Commercial Buildings
- Surface Lots



Clearance	
Model	Height
C/C	10'-6"
C/S	12'-2"
S/S	14'-0"
S/S*	14'-6"

C = Compact/Sedan  
S = Standard/SUV  
\* LA City requirement

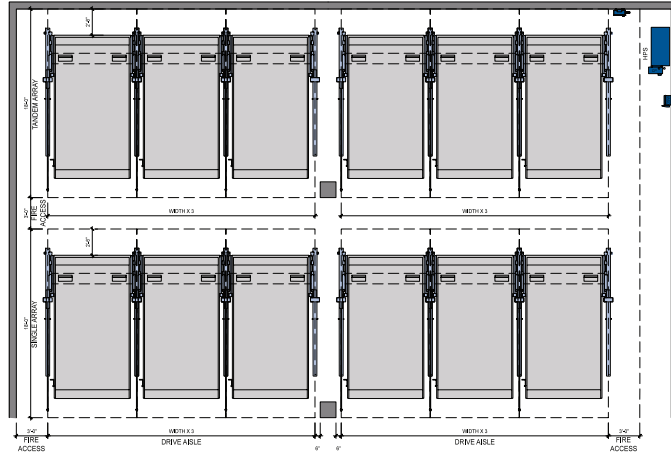
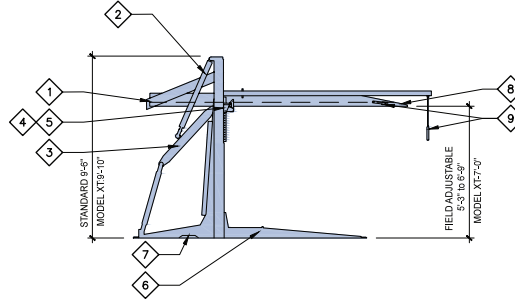
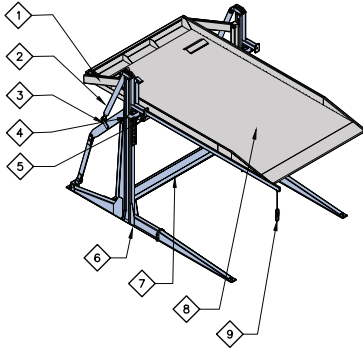


Width	
Model	Width
W01	7'-11"
W02	8'-3"
W03	8'-6"
W04	9'-0"
W05	Custom

WIDTH =  
Center of Leg to Center of Leg

- ◇ IN-HOUSE DESIGN, MANUFACTURING, INSTALLATION & SERVICE
- ◇ MINIMAL MOVING PARTS – REDUCED MAINTENANCE

- ◇ GALVANIZED, COMMERCIAL-GRADE MACHINES
- ◇ PREMIUM QUALITY HYDRAULIC CYLINDERS



## Components

- ① Cradle Frame Assembly
- ② Hydraulic Cylinder
- ③ Parallel Arm Assembly
- ④ Adjustable Height Assembly
- ⑤ Safety Locks Assembly
- ⑥ End Leg Assembly
- ⑦ Seismic Beam Assembly
- ⑧ Platform Assembly
- ⑨ Push Button Controls

## Layout

**PARKPLUS DP003** Double Stacker can be arranged in single or tandem arrays on either side of a drive aisle. Queuing space of at least 2 vehicles must be provided to allow for shuffling of cars. Queuing space may be in drive aisle. For commercial projects, during peak traffic, all platforms will be lowered for quick filling of stackers. Surface space to be provided for code-required Accessible Parking.

## ADDITIONAL INFORMATION

### Safety

Device is equipped with safety locking system. 'Posi-lock' double suspension system holds full weight of vehicle on platform in locked position. Device can be equipped with individual keyed controller for extra safety. Self-attended applications may require additional sensors to detect objects located under platform or entering the area below platform.

### Fire Protection

In most metropolitan areas, car stackers are reviewed as similar to high piled storage and non-building structures. Fire rating of structural components is not required. Sprinklers may be required per following section. Each city may have different fire department guidelines.

### Fire Sprinklers

**Outdoor:** 1. Most cities do not require fire sprinklers. 2. May need to conform to additional zoning regulations and building code requirements.

**Indoor:** 1. Installation shall be in a sprinklered garage. In tandem array, additional sprinkler requirements may apply. 2. Sprinkler Plans filed and approved by local municipality. 3. Sprinkler system designed as required by NFPA 13 and local building codes. 4. Clear building height within parking area must accommodate height of equipment plus additional requirements for adequate coverage of fire sprinklers.

### Temperature

Device is designed to operate between 20° and 120° F. For below freezing environments, hydraulic heaters for Power Packs are recommended.

### Loading

Structural design and loading is provided on a project by project basis and is dependant on seismic zones, soil conditions and other environmental conditions.

### Warranty

12-month Standard Manufacturer's Warranty on new equipment. Equipment Lifespan: Indoor = 7,500 cycles; Outdoor = 5,000 cycles.

### Service

At end of 12-month warranty period a service contract is available upon request. Rental option may include Service & Maintenance for full term.

### Approvals

- MEA/OTCR Certified, City of New York
- LAETL Approved, LARR#930501, City of Los Angeles
- California Seismic Code Compliant
- Miami Dade County Compliant
- Approved in multiple U.S. Cities

## TURNKEY PROJECT SOLUTIONS

**PARKPLUS** is the leading provider of high density parking systems, with the most completed projects, and the most extensive product range, in the United States. **PARKPLUS** was established over 50 years ago, our experience is based on a multitude of projects spanning over half a century.

To ensure the highest quality in our parking solutions, **PARKPLUS** provides complete service across every project. We employ professional full-time staff dedicated to **Design & Engineering**, **Assembly & Installations**, **Procurement & Manufacturing**, and **Service & Support**.

## HIGH DENSITY PARKING SYSTEMS



### Automated Systems

Advanced technologies for robotic parking solutions

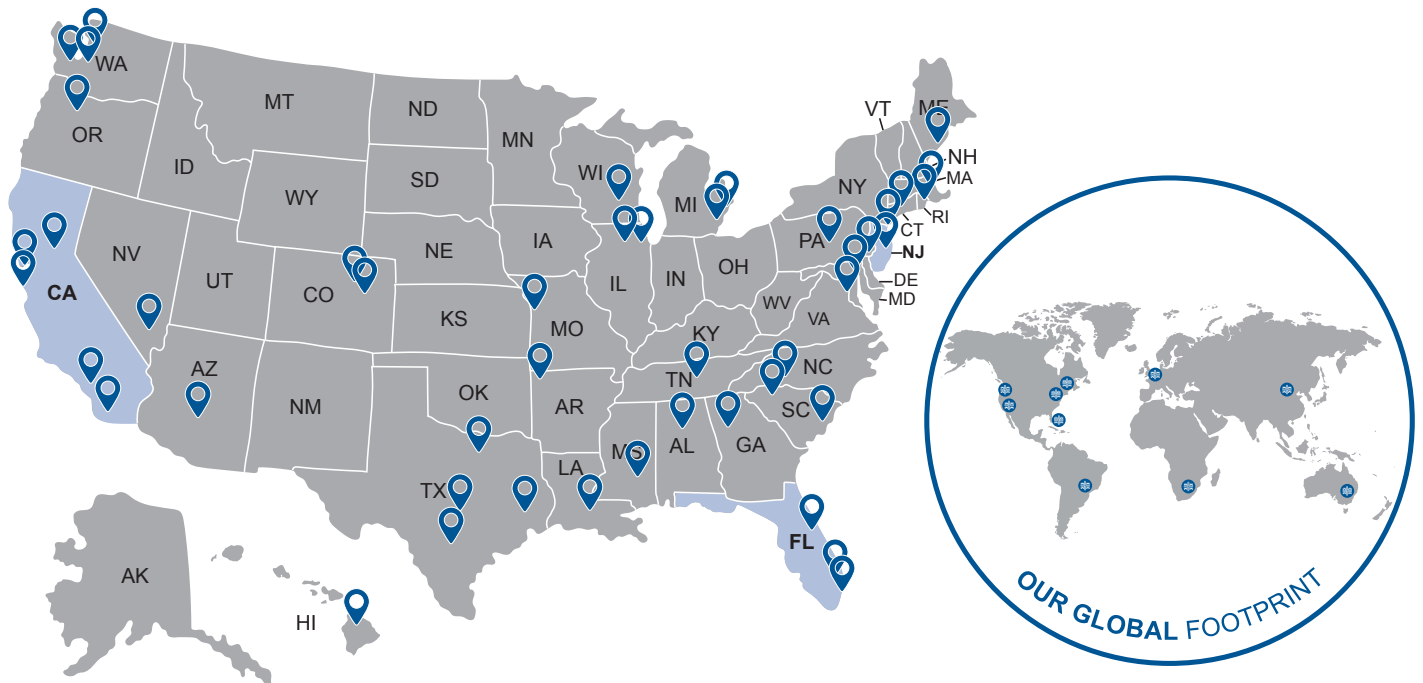
### Mechanical Stackers

Attended systems for multi-level basic stacking

### Custom Solutions

Creative solutions for custom design & exposure

## OUR USA PROJECT FOOTPRINT



**PARKPLUSINC.COM**  
**INFO@PARKPLUSINC.COM**

☎ +1 (844) 472 7575 / 8 444 PARKPLUS

**PARKPLUS, INC. HEADQUARTERS**  
160 E UNION AVENUE,  
EAST RUTHERFORD, NJ 07073  
☎ +1 (201) 917 5778

**PARKPLUS CALIFORNIA**  
8640 TAMARACK AVENUE, LOS  
ANGELES, CA 91352. **CSLB# 1018794**  
☎ +1 (800) 459 2604

**PARKPLUS FLORIDA, INC.**  
1111 OLD GRIFFIN ROAD  
DANIA BEACH, FL 33004  
☎ +1 (954) 929 7511